

Adverse Childhood Experiences (ACEs)

Problem

ADVERSE CHILDHOOD EVENTS:

- Correlate to disrupted neurodevelopment in children and adoption of health risk behaviors.
- Were identified in at least 61% of US adults.
- Result in poor long-term health outcomes and early death.

Barriers

UNDERSERVED AND MINORITY POPULATIONS:

- Utilize behavioral health services less often, including screening and treatment for ACEs.
- Experience a gap in language and cultural compatibility with health care providers.
- Encounter bias, inequity and lack of resources within health care settings.

Strategy

THE "ACES AWARE" FRAMEWORK:

- Guides the creation of a network of care in one rural county in California: Merced County.
- Establishes screening for ACEs and channels of referral for care.

Solution

ESTABLISHING AN ACES NETWORK OF CARE IN MERCED COUNTY CALIFORNIA:

- Addresses adversity early and interrupts the pathway to disease and disability.
- Establishes a template to expand this framework in other counties.

ADVERSE CHILDHOOD EXPERIENCES INCLUDE:

NEGLECT

Physical
Emotional

HOUSEHOLD CHALLENGES

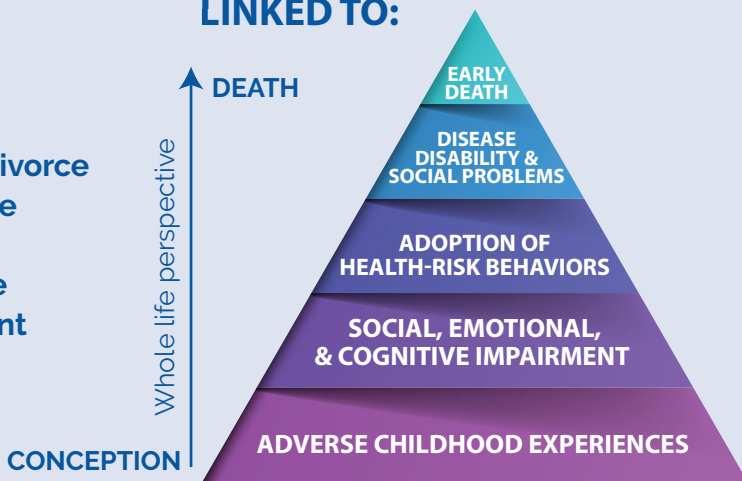
Parental separation/divorce
Domestic violence
Mental illness
Substance abuse
Incarcerated parent

ABUSE

Physical
Emotional
Sexual



ADVERSE CHILDHOOD EXPERIENCES HAVE BEEN LINKED TO:



Alliance toll free phone number: 800-700-3874 | (TTY: Dial 800-735-2929 or 711).