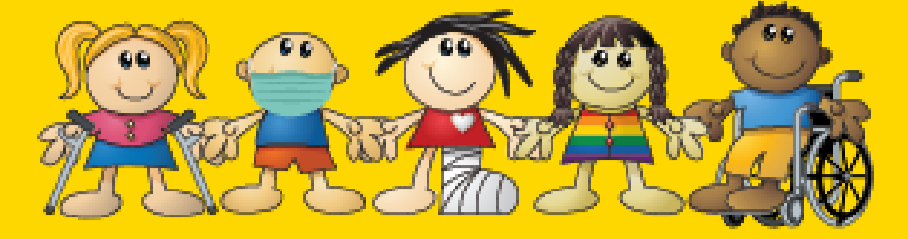


# Integrating EQUITY

## into the Golisano Children's Hospital Strategic Plan



### WHO WE ARE



Located in **Rochester, NY**



Referral center for all children in 17 county **Finger Lakes** Region



Academic Non-Profit Acute Care **Children's Hospital**



>85,000 families  
>2,000 ICU admissions  
21,000 pediatric surgeries **Annually**

### WHAT WE PLANNED TO DO

#### AIM 1

Understand how to integrate **equity** into each **pillar** of the strategic plan



#### AIM 2

Understand, value, and promote **diversity** while providing **equitable** and **family-centered** care

### WHAT WE DID



#### EQUITY

##### Identification and Elimination of Clinical Disparities

- Inpatient Health Equity Dashboard: Data validation with UR Medicine Quality Institute team
- Will utilize dashboard to identify disparities and focus improvement efforts

##### Patient and Family Relations Perspective

- Engagement with Chief Patient Experience Officer to identify (and then eliminate) disparities in patient and family experience

##### Community Perspective

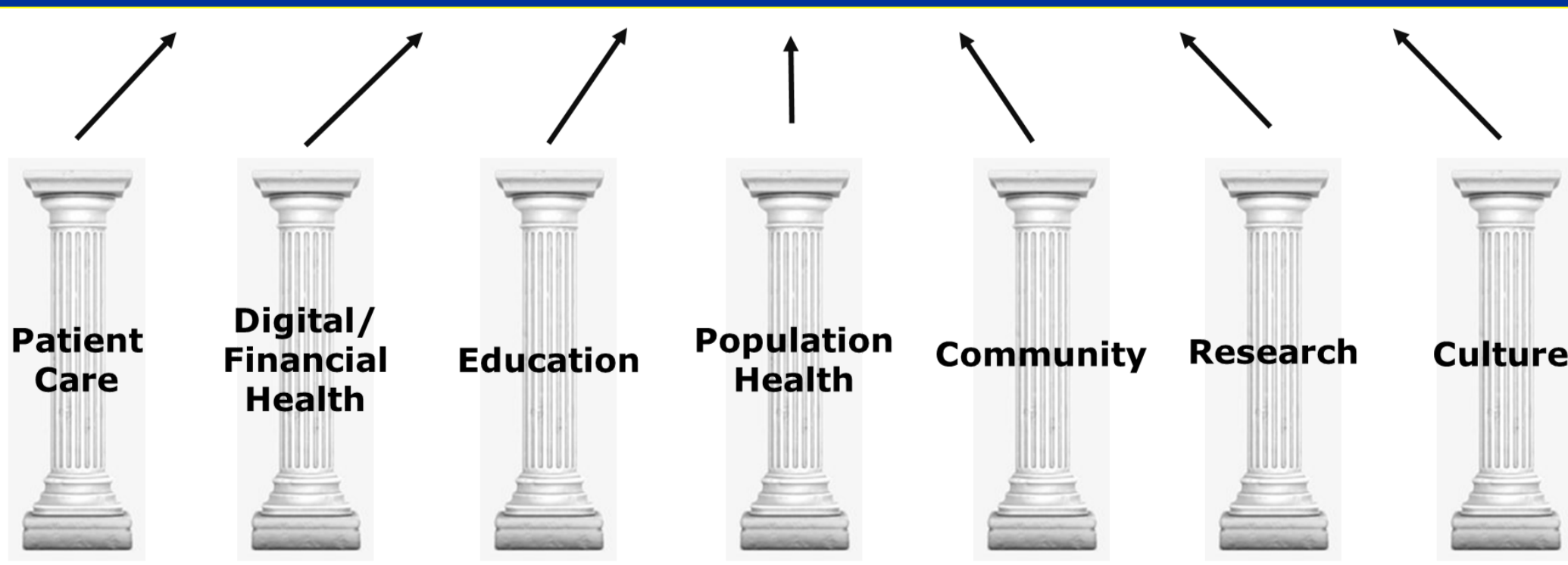
- Engagement with Vice Chair for Population and Behavioral Health and community organizations
- Meetings with stakeholders at URM and GCH currently engaged in hospital and/or community-based DEI work, including C-suite executive sponsors

### NEXT STEPS:



#### GCH Health Disparities Steering Committee

#### Vision: Improving Children's Lives



#### Child Health Equity

- Create the committee and structure with support from the Chair of Pediatrics and GCH Physician-In-Chief
- Unify numerous stakeholders conducting siloed health equity efforts
- Obtain a validated and finalized dataset
- Develop a pilot project to examine GCH health disparities
- Continue to meaningfully engage with community organizations who will have a consistent seat at the table