

BRIDGING CAMPUS TO COMMUNITY

Pre-medical & other Health Career students working, learning & treating those in need



Susan B. Towler
Executive Director
Florida Blue Foundation



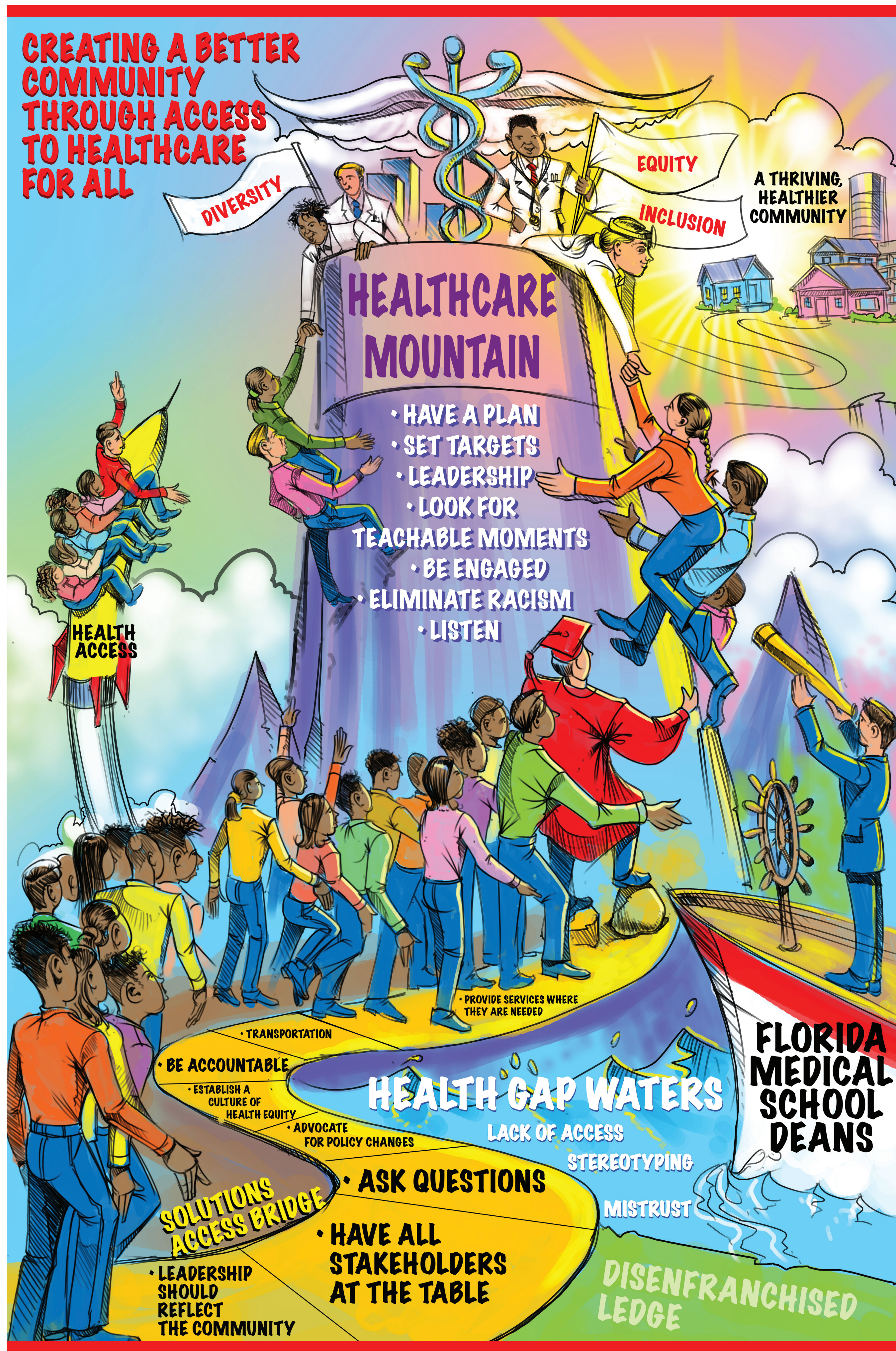
Velma Monteiro-Tribble
Consultant
Florida Blue Foundation

OBJECTIVES

- Expand students' outreach & experiential learning
- Foster a better understanding & commitment to health care parity for all
- Increase positive health outcomes for those in need

EXPECTED OUTCOMES

- Students have increased cultural understanding, sensitivity, passion & commitment to practice and implement health care in a different & equitable way
- Improved health care delivery & outcomes for the population served
- Experiential learning related to social determinants of health
- Increased food security to families served



Total Students Reached
6,000

Total Population Served
34,000

FLORIDA BLUE FOUNDATION INVESTMENT IN MULTI-YEAR PROGRAMS
\$2.5 MILLION

POPULATION SERVED
Homeless
Underserved and underinsured
Rural low-income at-risk communities with lack of health care
Other families & individuals in need of health care
Individuals with substance & drug abuse disorders

GRANTEES
Florida International University, Miami
Florida State University, Tallahassee
University of Central Florida, Orlando
University of Florida, Gainesville
University of South Florida, Tampa

SUMMARY OF GRANTEES' PROGRAM CONTENT

- Comprehensive study of health & health care access by specific high-poverty zip codes
- Holistic interventions & metrics to train socially accountable students to have positive patient health care outcomes
- Experiential learning about the health care needs of rural residents
- Develop skills & appreciation of diverse social/cultural aspects of rural & underserved communities
- Increase clinic services, research and numbers served at clinics
- Enhance curricular-based student learning to identify & address social drivers to promote improved patient outcomes
- Necessary knowledge and skills development to identify unique needs of patients
- Explore ways to advocate & improve better outcomes for specific populations
- Create metrics & evaluations to track progress, outcomes & impacts

