

A Look at Health Disparities within the Triple Aim at Nemours/ Alfred I. duPont Hospital for Children

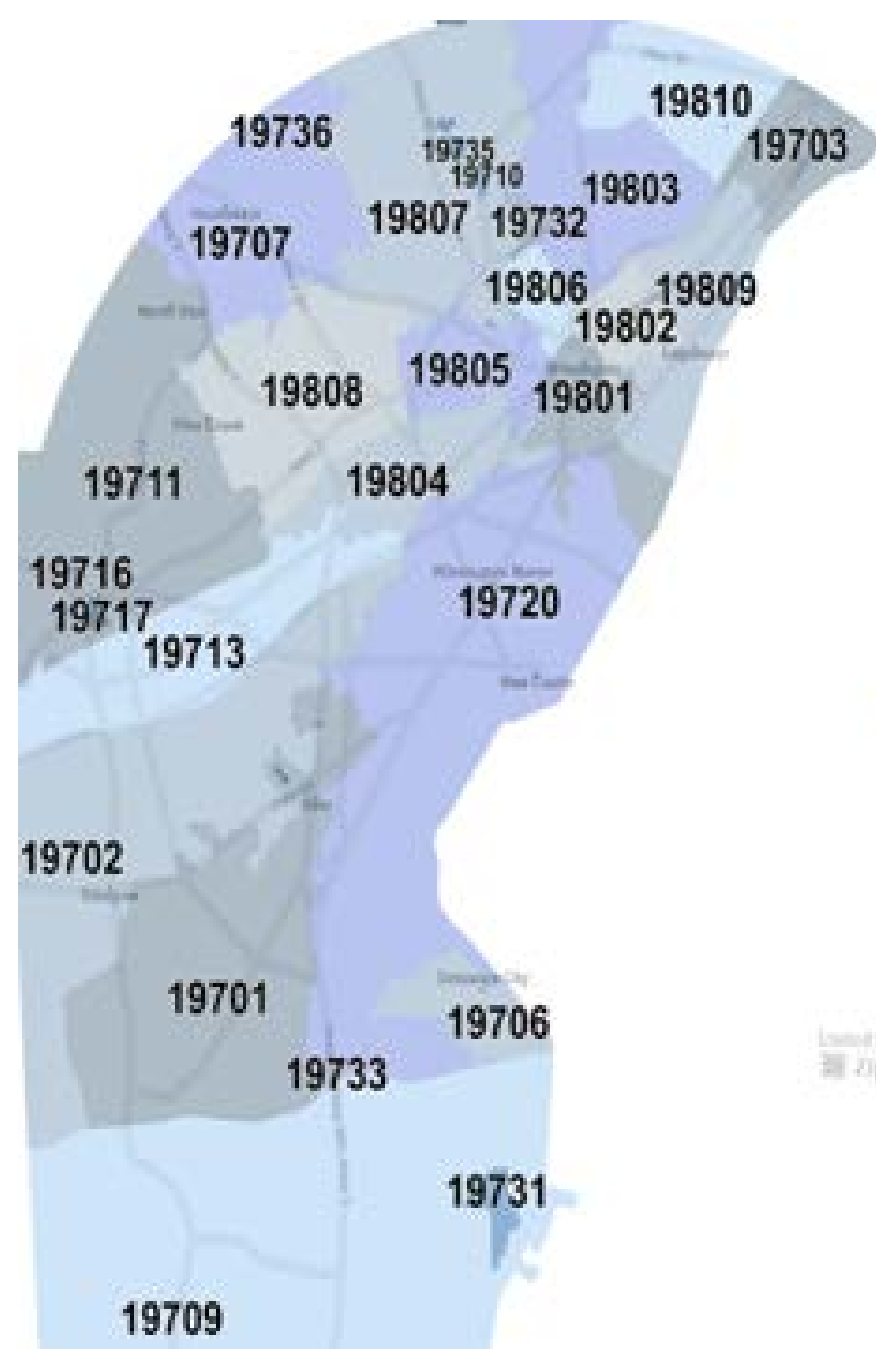
Dr. Kirk Dabney, Jane Mericle, Patricia Mullan, Dr. Alisa Haushalter and Cindy Bo

The Problem

Our organization collects race, ethnicity, and language data but does not routinely monitor quality metrics by these variables. Linking population health, quality, and cost will be critical to successfully care for populations with health disparities.

The Goals

- (1) Create a Health equity dashboard stratified by Race, Ethnicity, Language, and Insurance that spans metrics across the triple aim: Population Health, Quality (patient experience), and per Capita Cost
- (2) Utilize the dashboard to identify current disparities in population health, patient experience, and cost within subpopulation (e.g.: inpatient population)
- (3) Utilize the dashboard to identify value and prioritize opportunities to improve equity and lower overall cost. Incorporate the health equity dashboard into Nemours Delaware Valley True North metrics



2014 Top Zip Codes for:

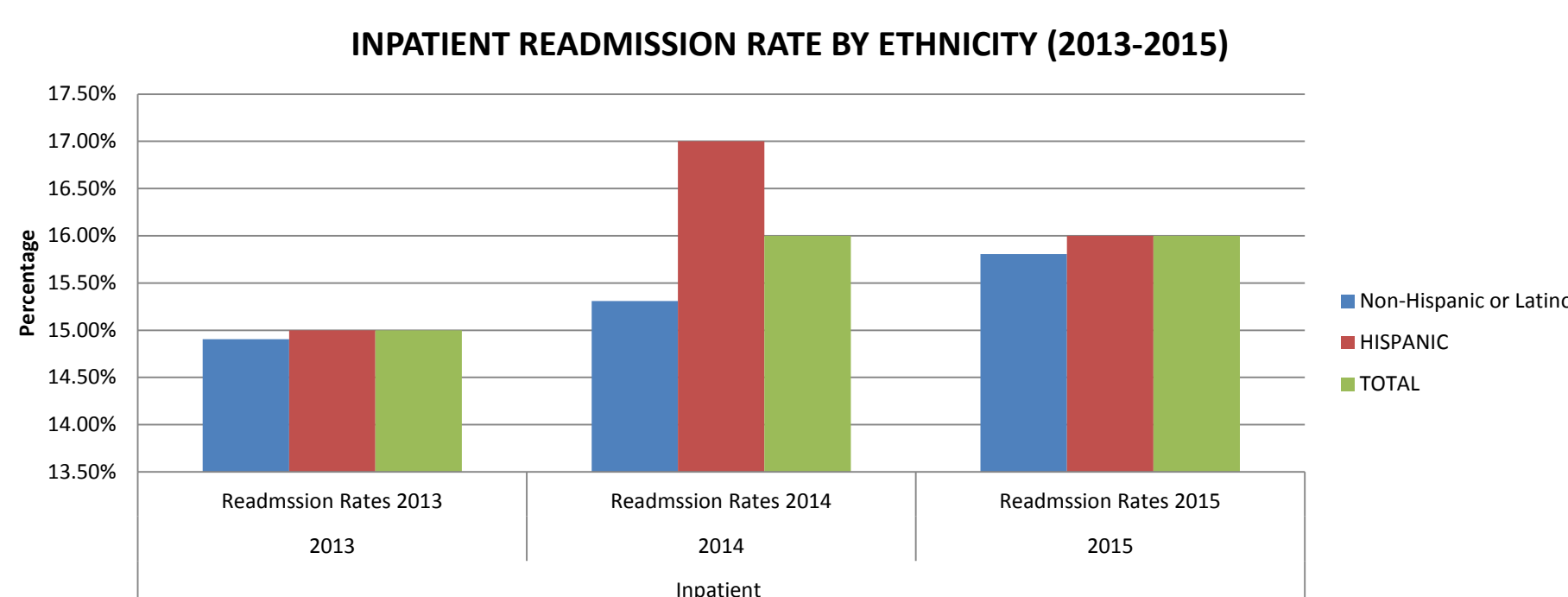
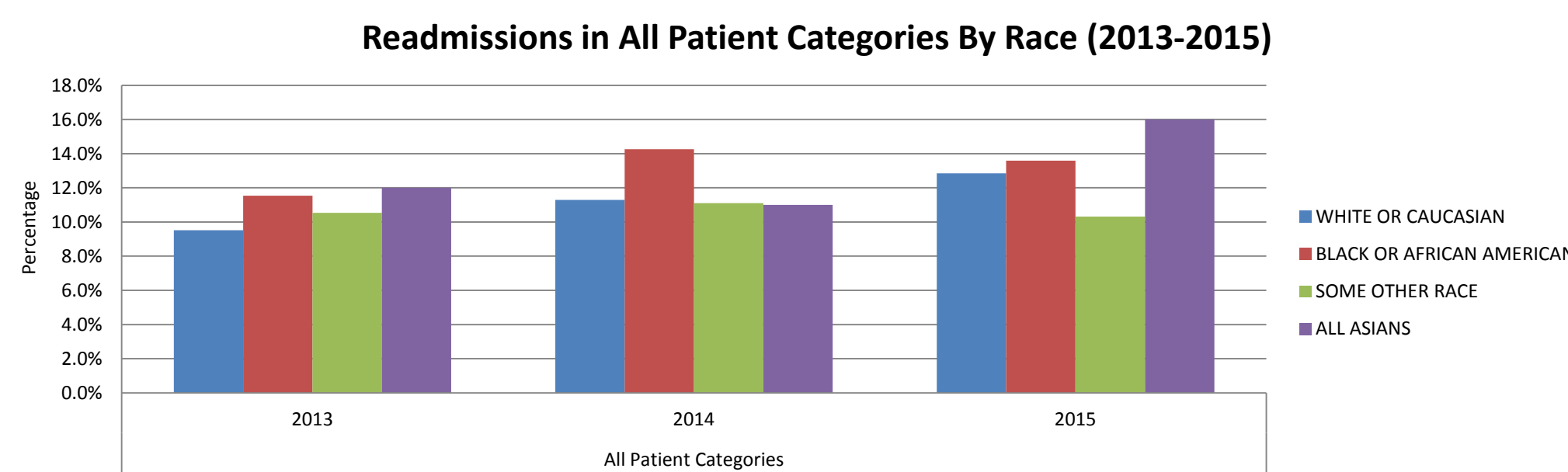
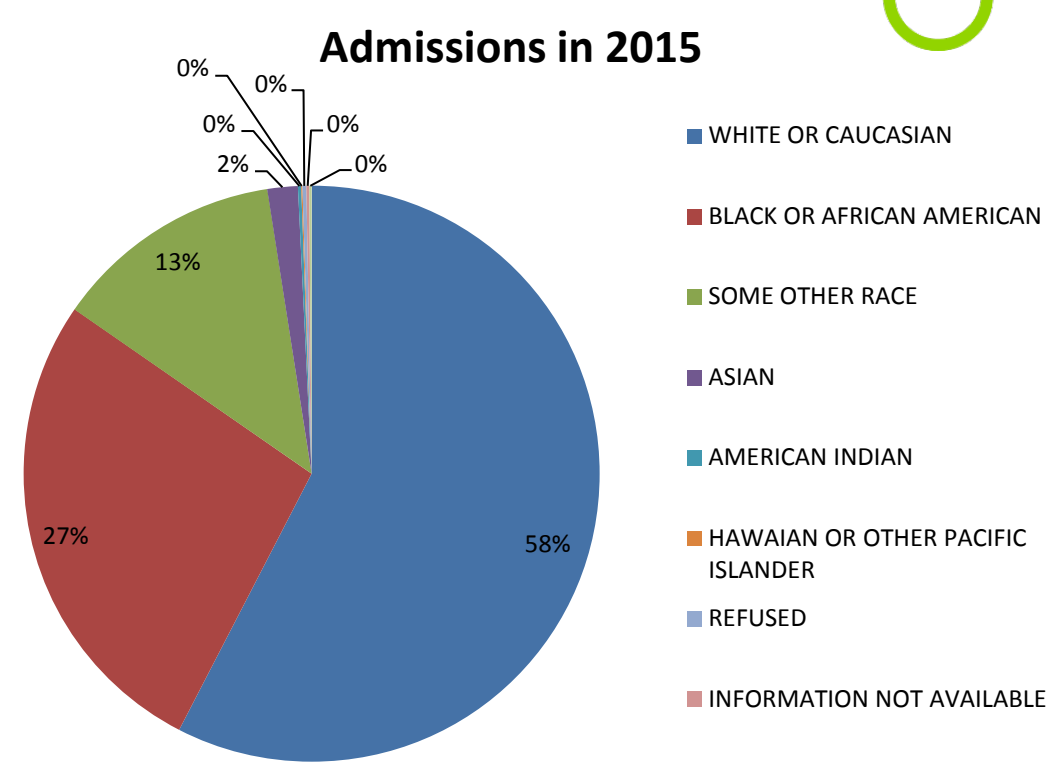
Readmissions:	Trauma:
19702	19320
19720	19720
19801	19773
19802	19805
19805	

Asthma:

- 19701
- 19709
- 19720
- 19802
- 19805

Alfred I. duPont Hospital for Children Analyses

Readmissions



Average Total Cost Per Patient (\$)

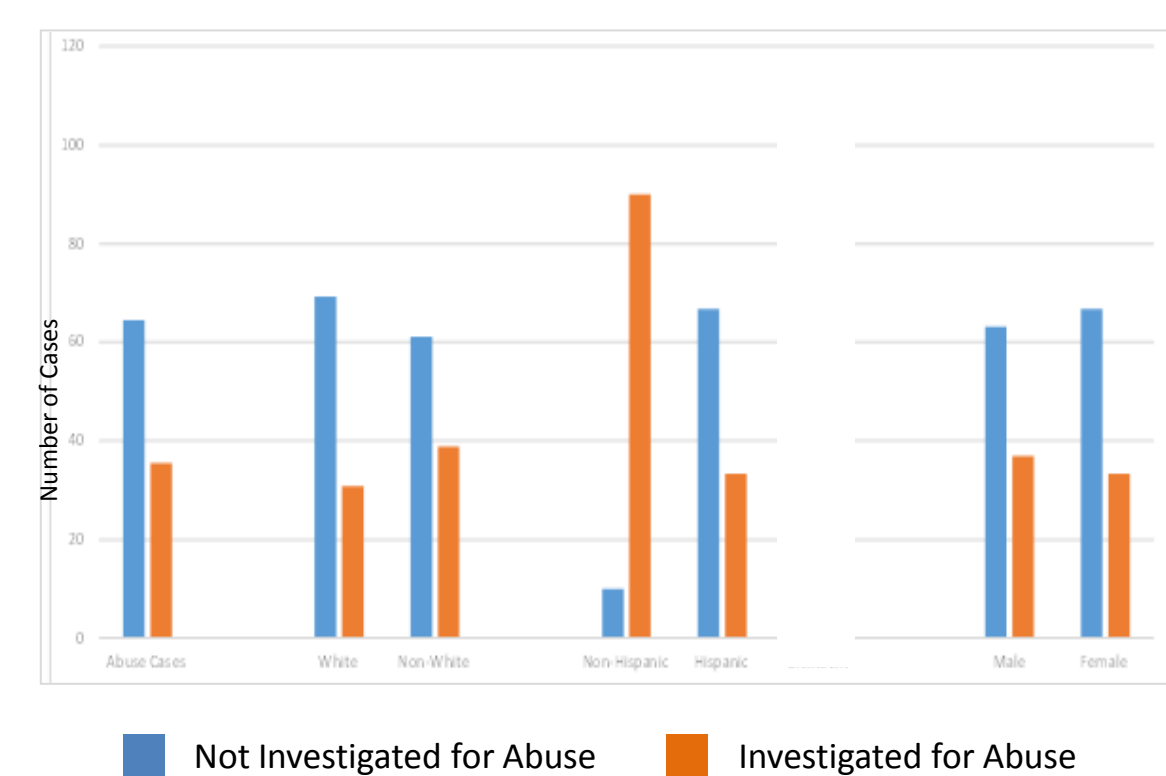
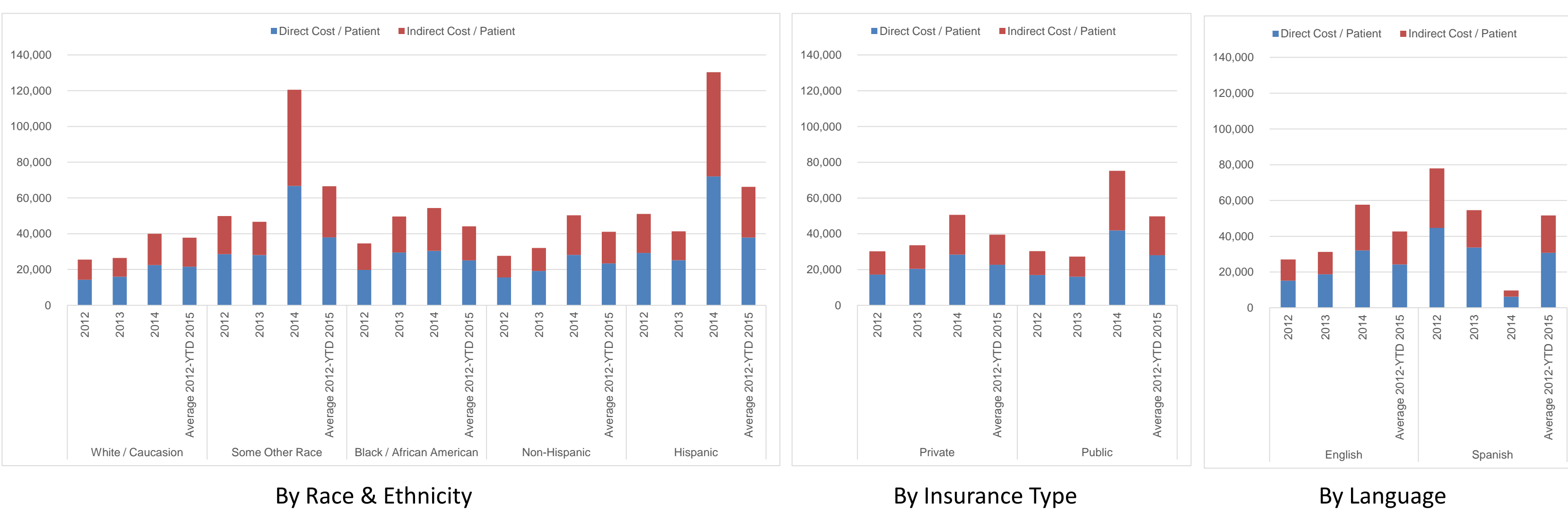
	Inpatient	
	2013	2014
Race		
All Patients	27,440	29,246
White/Caucasian	24,617	29,541
Black/African American	28,329	31,431
Some Other Race	33,771	23,136
Asian	42,346	13,982
Ethnicity		
Non-Hispanic Latino	26,006	28,971
Hispanic Latino	35,188	31,076
Mexican/Mexican American/Chicano	26,722	22,921
Puerto Rican	28,874	27,478
Another Hispanic	37,218	32,486
Insurance		
Public	29,550	30,178
Private	25,517	28,314
Language		
English	27,400	28,870
Spanish	29,153	28,250

Trauma



Direct Costs & Indirect Costs By Type For All Trauma Patients

Non-Accidental Trauma Reporting/ Investigation for White vs. Non-White (2014-2015)



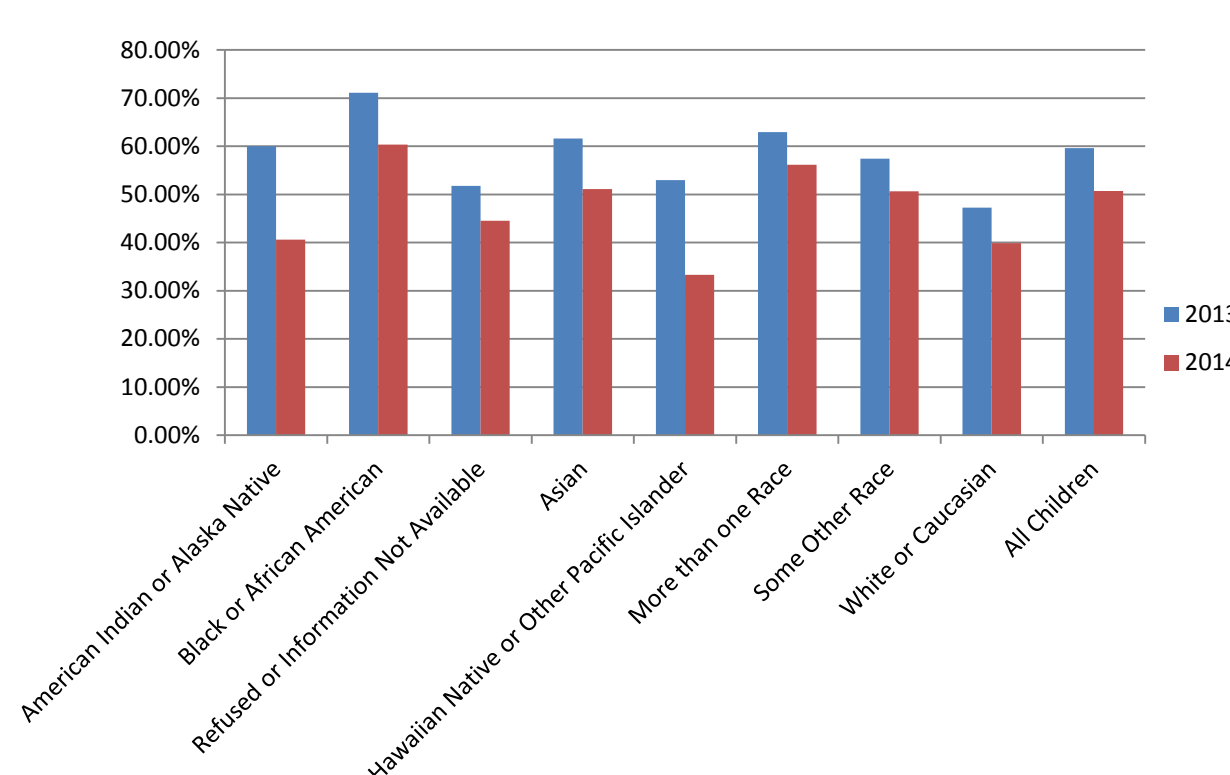
Asthma



Next Steps



Percent of Children with Well-Child Visits, by Race



← 2014 & 2015 Asthma Multiple, 90-Day, 30-Day and 7-Day Readmissions by Race

Average Total Cost Per Patient (\$)

	2014	
	All Patients	Inpatient
Race		
All Patients	\$5,387	\$7,381
White/Caucasian	\$5,048	\$6,883
Black/African American	\$5,193	\$7,007
Some Other Race	\$5,726	\$8,123
Asian	None	None
Ethnicity		
Non-Hispanic Latino	\$5,416	\$7,046
Hispanic Latino	5,310	9,055
Mexican/Mexican American/Chicano	\$6,453	\$3,807
Puerto Rican	None	None
Another Hispanic	\$5,046	\$10,368
Insurance		
Public	\$5,653	\$8,061
Private	\$4,906	\$6,492
Language		
English	\$5,243	\$6,915
Spanish	\$6,941	\$13,902

- Identify missing elements in the cost data
- Establish urgency; still difficult with some elements within the organization
- Create a shared vision with remainder of the organization
- Communicate vision repeatedly; some challenges with helping coalition to completely understand the dashboard from the equity perspective