

Health Disparities in Child Protection Referrals

Increasing our Effectiveness in Engaging Diverse Families While Assessing for Child Maltreatment

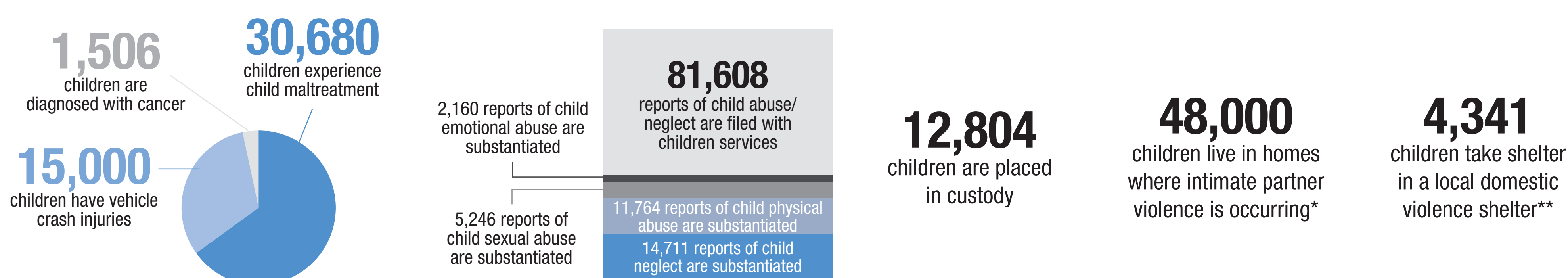
Child Abuse:

Any recent act or failure to act on the part of a parent or caretaker that results in death, serious physical or emotional harm, sexual abuse or exploitation; or an act or failure to act which presents an imminent risk of serious harm.

Defined by the Federal Child Abuse Prevention and Treatment Act – Child Welfare Information Gateway. Child abuse and neglect. National Clearinghouse on Child Abuse and Neglect Information. US Department of Health and Human Services; Washington DC 2004

Each year among 2,718,078 children in Ohio:

(children birth through 17)



Considerations

Do racial disparities exist in rates of assessment of child maltreatment and the reporting of such to Child Protection Agencies?

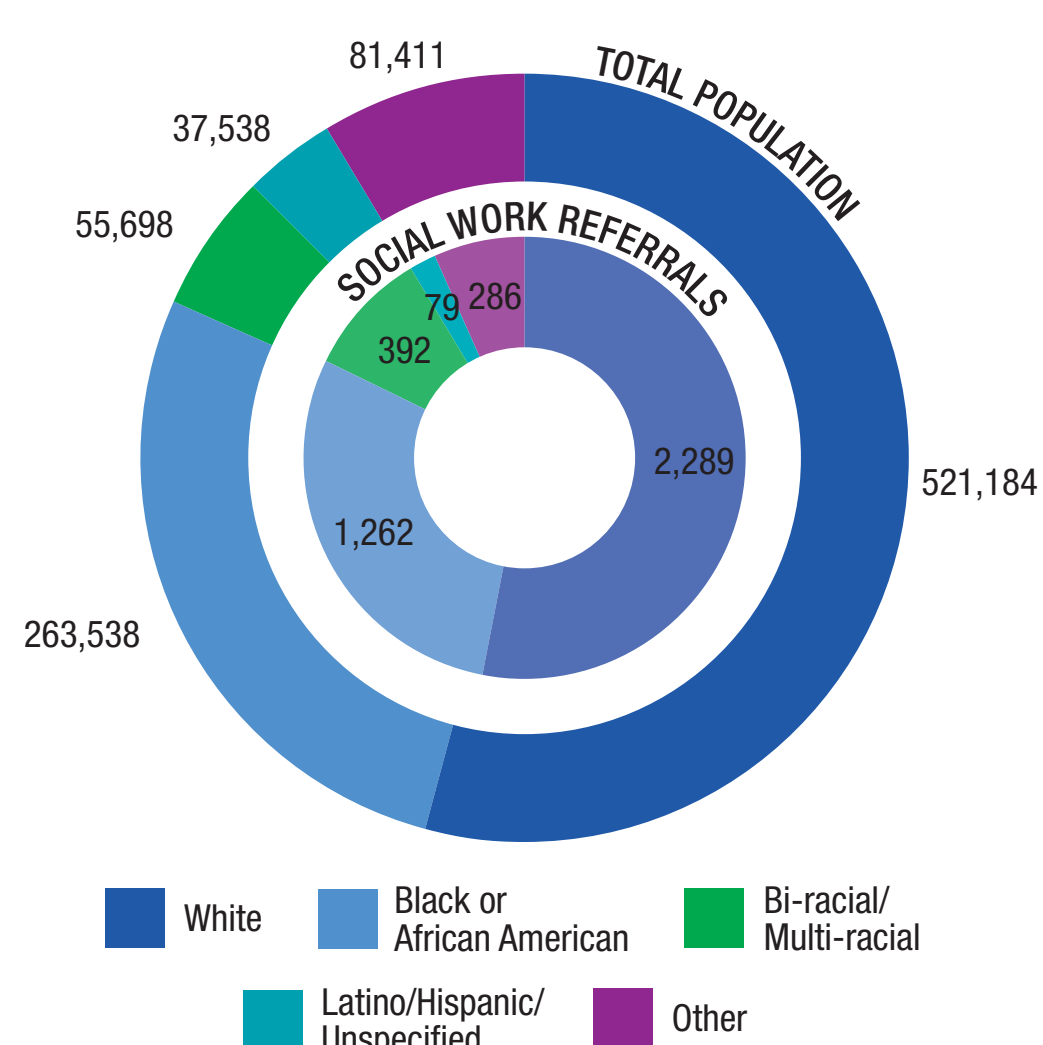
Are minority children reported more often than white children to child protection agencies following assessment by Social Work?

Are minority children referred to Social Work for assessment of child maltreatment **at rates that are different** from white children?

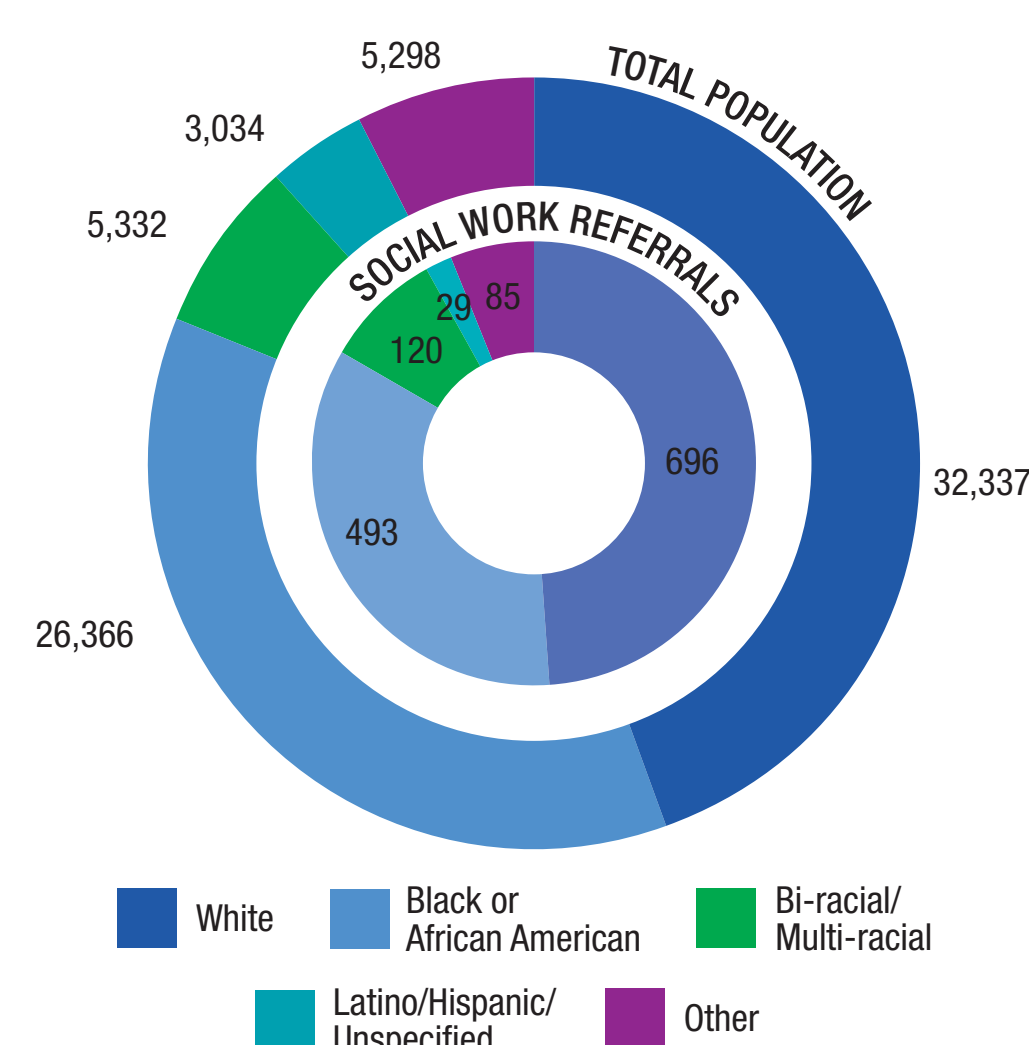
Are the **proportions of children in these racially disparate groups similar to the general patient population** of the organization?

Nationwide Children's Patient Population by Race

NCH General Population



NCH Emergency Department Population



Next Steps

1

Conduct a survey for direct patient care employees to determine their abilities and comfort related to child maltreatment assessments. Note: Results Pending

2

Evaluate Skills, Knowledge, and Attitudes of staff/managers in areas identified to have disparities, and develop appropriate supports, training & resources for staff.

3

Determine patient/family satisfaction with their experience in the process of child maltreatment referral and assessment



NATIONWIDE CHILDREN'S
When your child needs a hospital, everything matters.SM