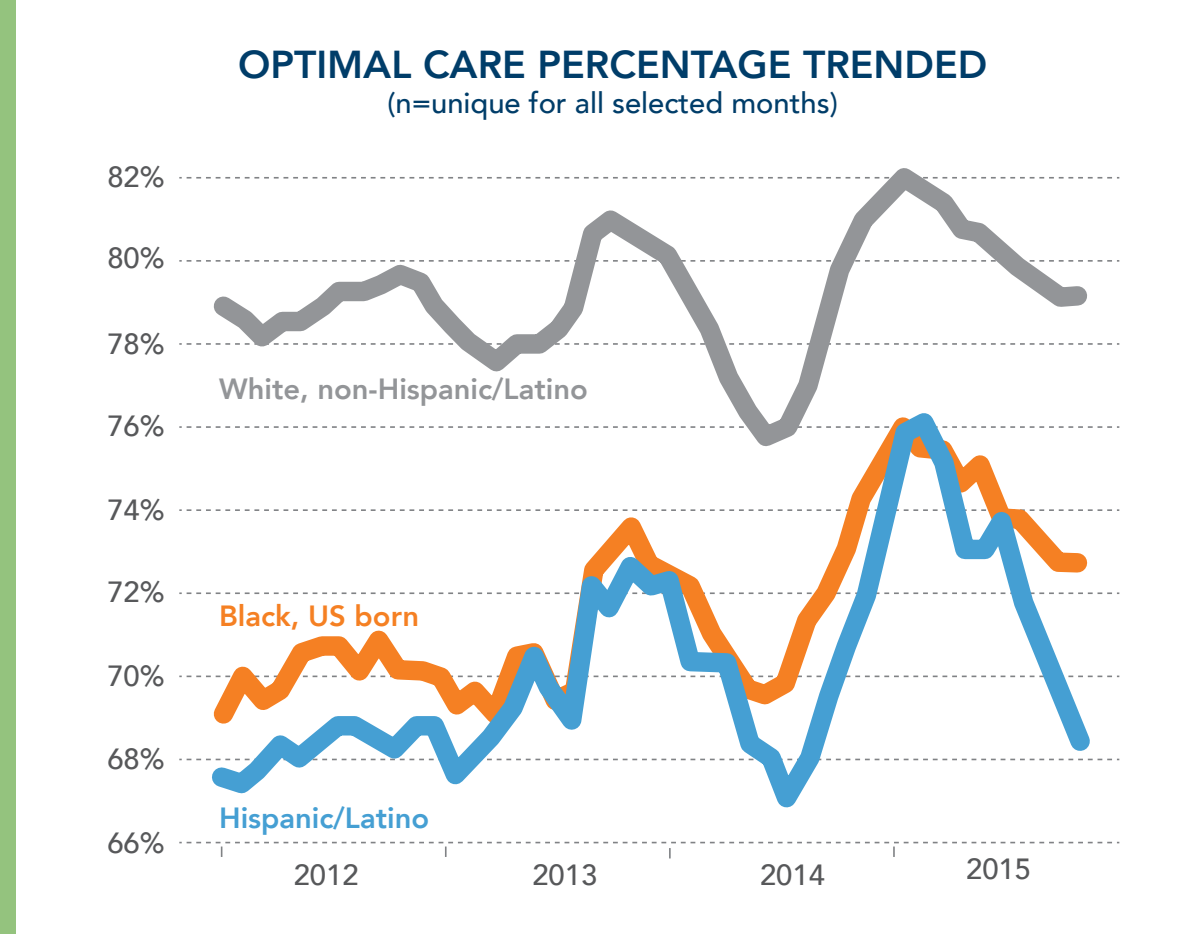


DIABETES MANAGEMENT With Equity Care Guide

THE PROBLEM

Some minority populations are experiencing disparity in diabetes glycemic control.



THE TACTIC

Equity Care Guides (ECG) are paired with Certified Diabetes Educators (CDE) for Intensive Diabetes Management (IDM).



CDE



ECG

WHAT IS AN EQUITY CARE GUIDE?



A lay healthcare worker who is...



...paired with the CDE



...easily accessible to patients and providers



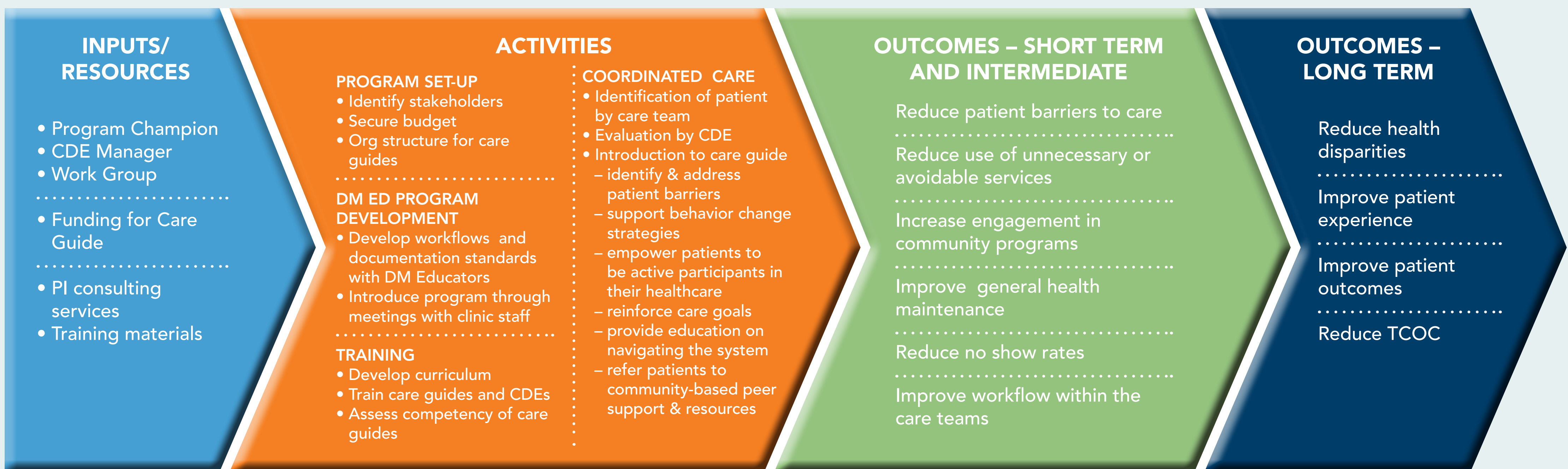
...culturally and linguistically congruent with the patient



...and a bridge between clinical care and community-based resources/support

EQUITY CARE GUIDE MODEL

The goal of the equity care guide model is to reduce health disparities among African American (US born) and Hispanic/Latino patients with diabetes. Patients using Allina Health primary care receive culturally responsive support through the use of Care Guides paired with Certified Diabetes Educators.



WHAT IS THE WORKFLOW?



Diabetes **Patient** is identified by **Provider** during chart prep.



Provider discusses co-management of medication with **CDE**. **CDE** determines whether there is need for an **Equity Care Guide**.



ECG meets **Patient** to identify needs/barriers to care.

