

# Enhanced Primary Care (EPC) in a Private Practice Setting

Majority of Medicaid membership is treated in Private Practices vs. Community Health Centers

## BEHAVIORAL HEALTH AND EMERGENCY ROOM UTILIZATION

### Medicaid Members

### Commercial Members

3,716

AVERAGE NUMBER OF MEMBERS

70%

60%

Avoidable ER visits



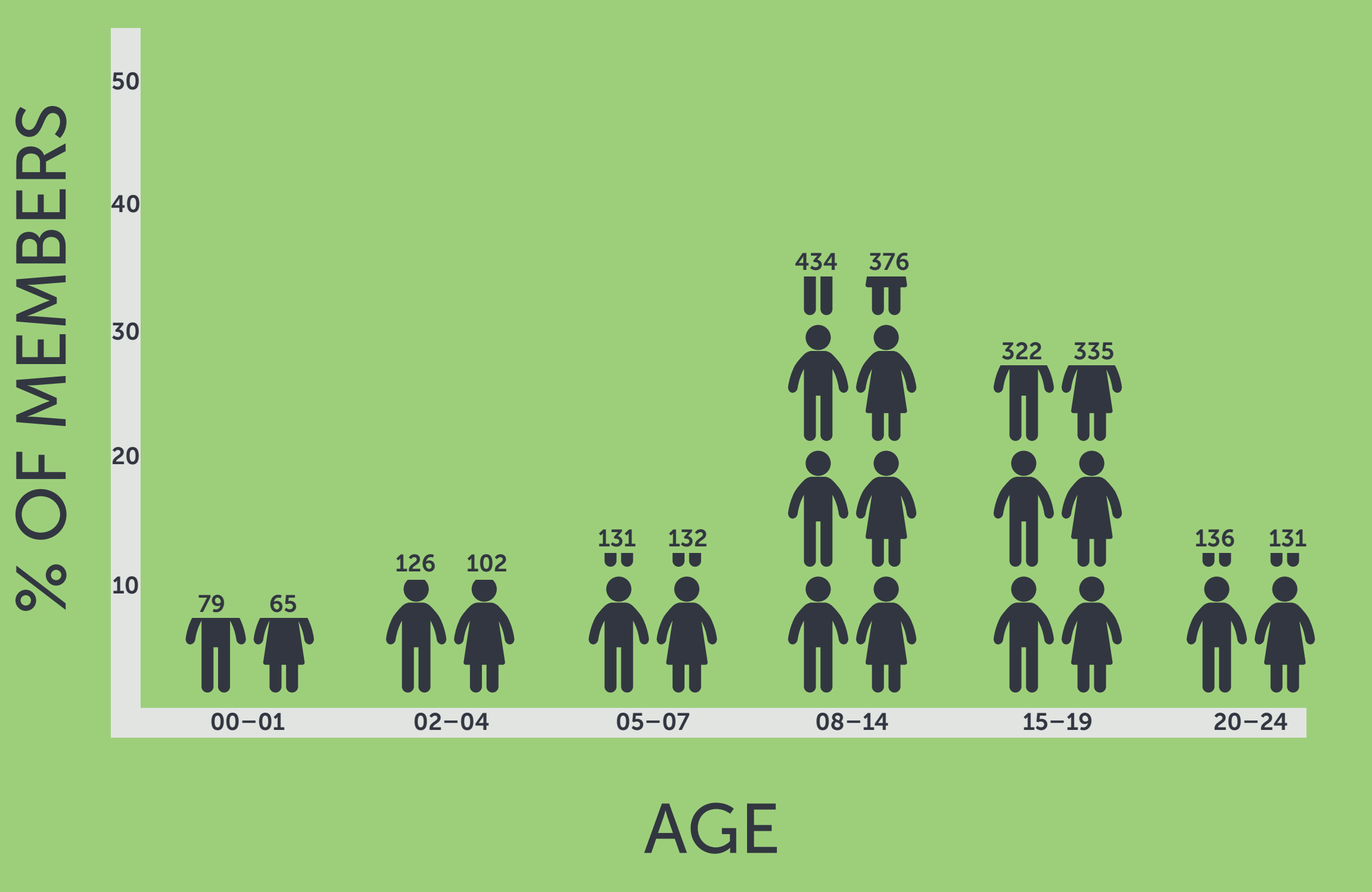
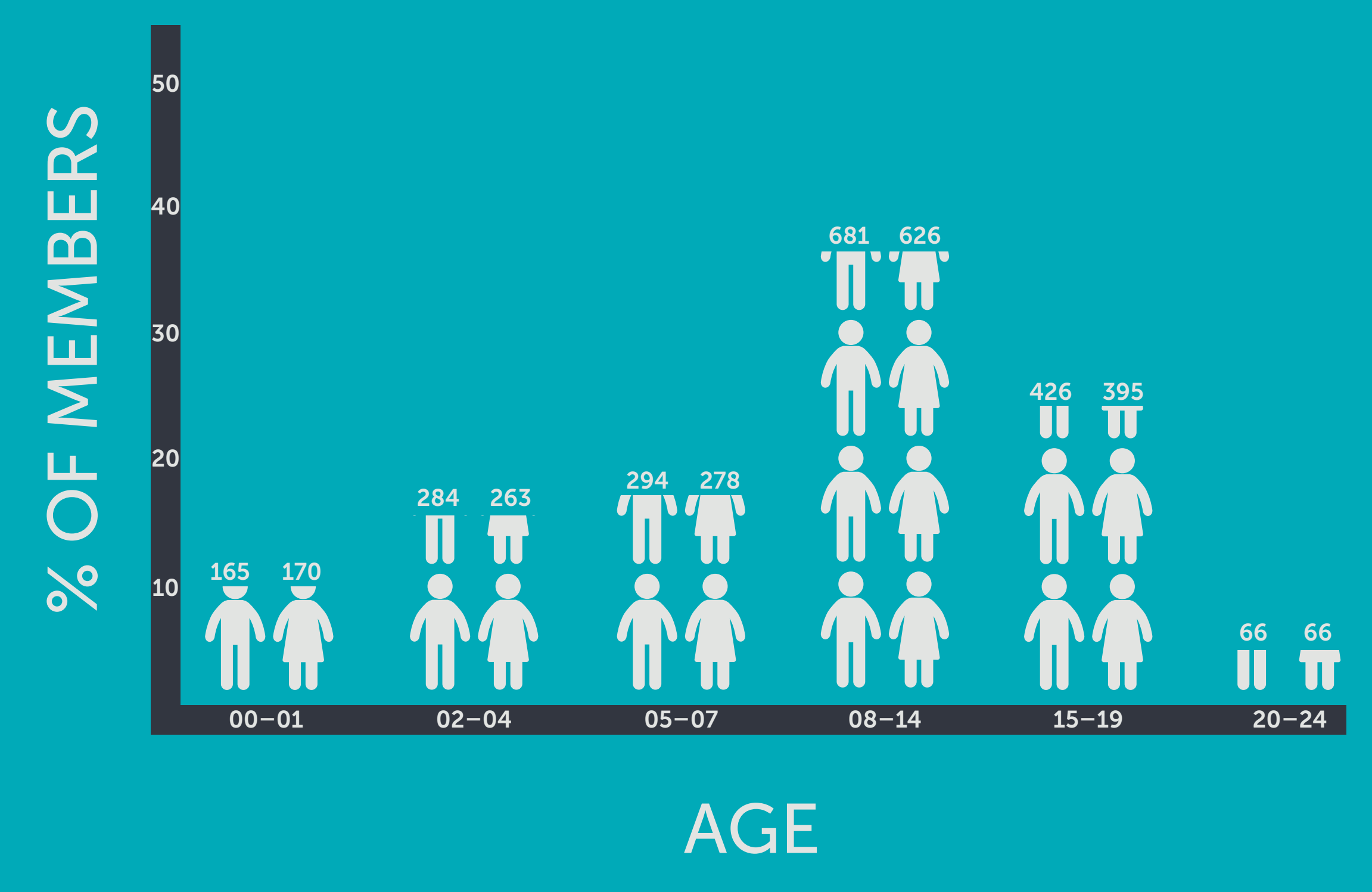
2,333

AVERAGE NUMBER OF MEMBERS

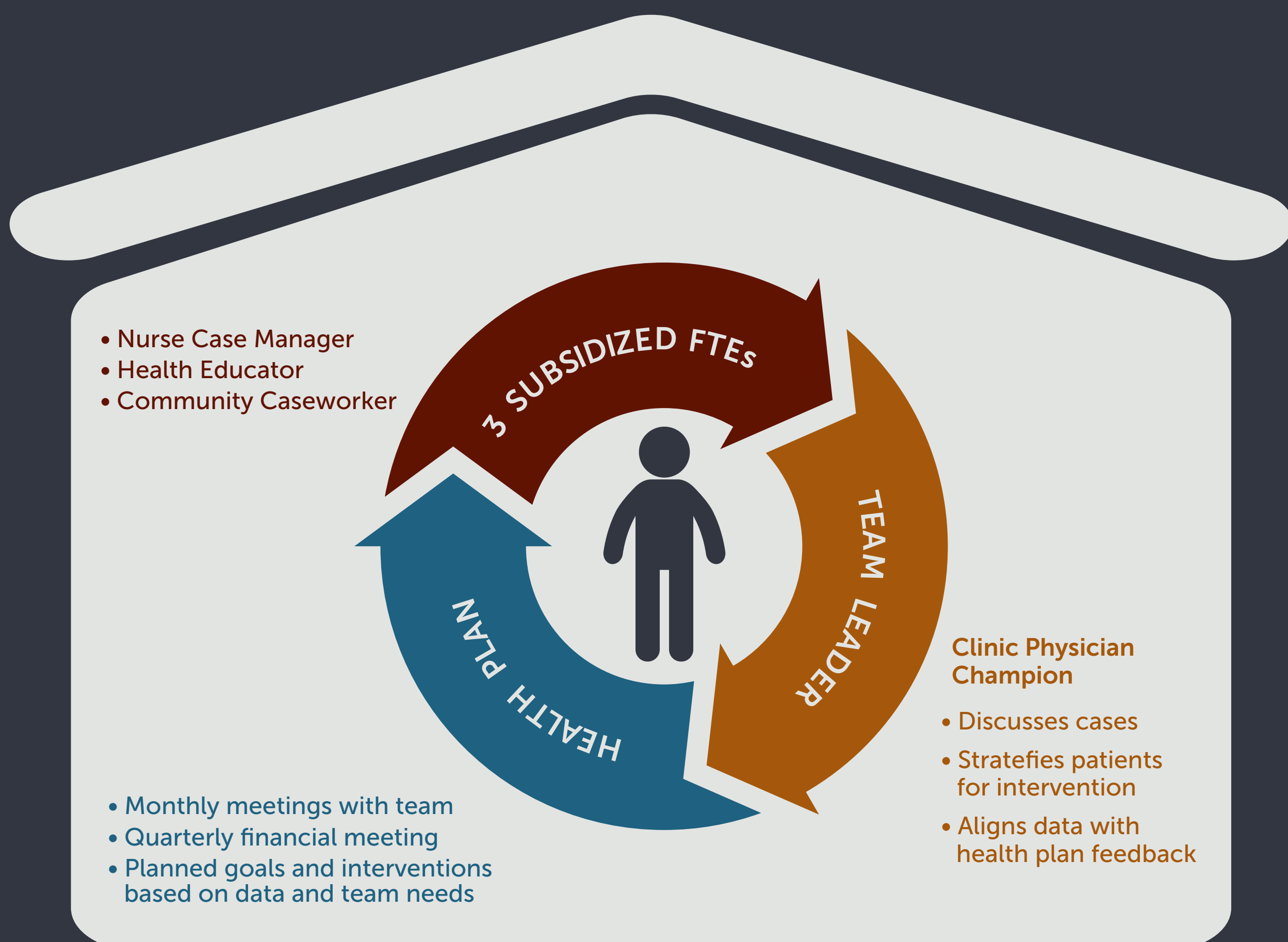
EMERGENCY ROOM	UTILIZATION/1000	287.4
	PAID PMPM	\$20.10
BEHAVIORAL HEALTH	UTILIZATION/1000	21,867.5
	PAID PMPM	\$50.58

EMERGENCY ROOM	UTILIZATION/1000	180.1
	PAID PMPM	\$7.53
BEHAVIORAL HEALTH	UTILIZATION/1000	4,944.6
	PAID PMPM	\$13.93

## MEMBERSHIP BY AGE/GENDER



## ENHANCED PRIMARY CARE MODEL: CASE MANAGEMENT



THE ENHANCED PRIMARY CARE MODEL IS CURRENTLY BEING USED AT 3 COMMUNITY HEALTH CLINICS

PROVIDES WHOLE PERSON, PATIENT CENTERED CARE



IMPROVING HEALTH CARE EXPERIENCE WHILE REDUCING COSTS

