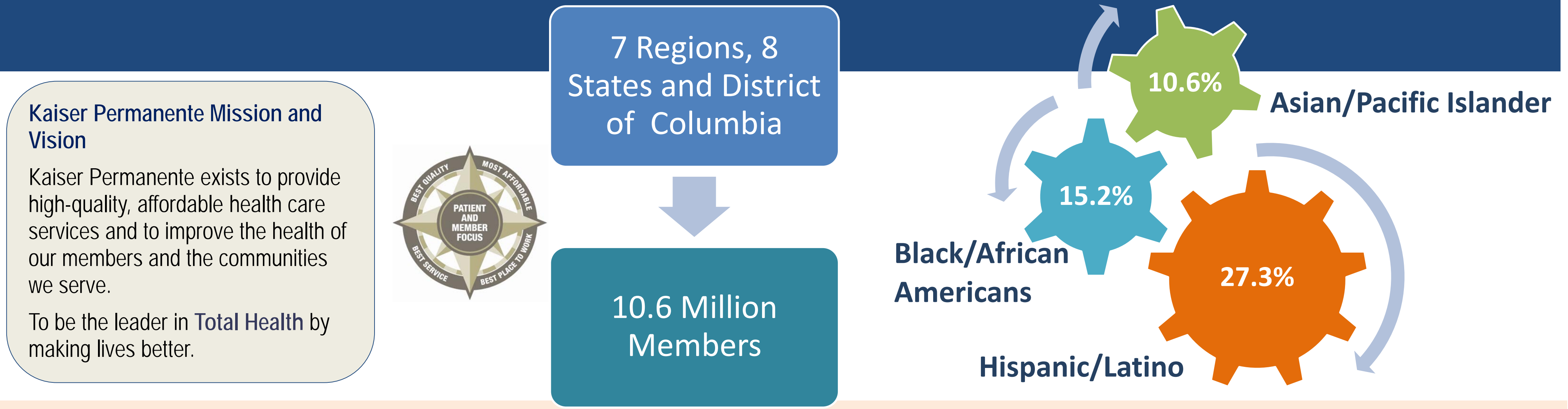


Transforming Equitable Care Health Outcomes (ECHO) to Health Equity

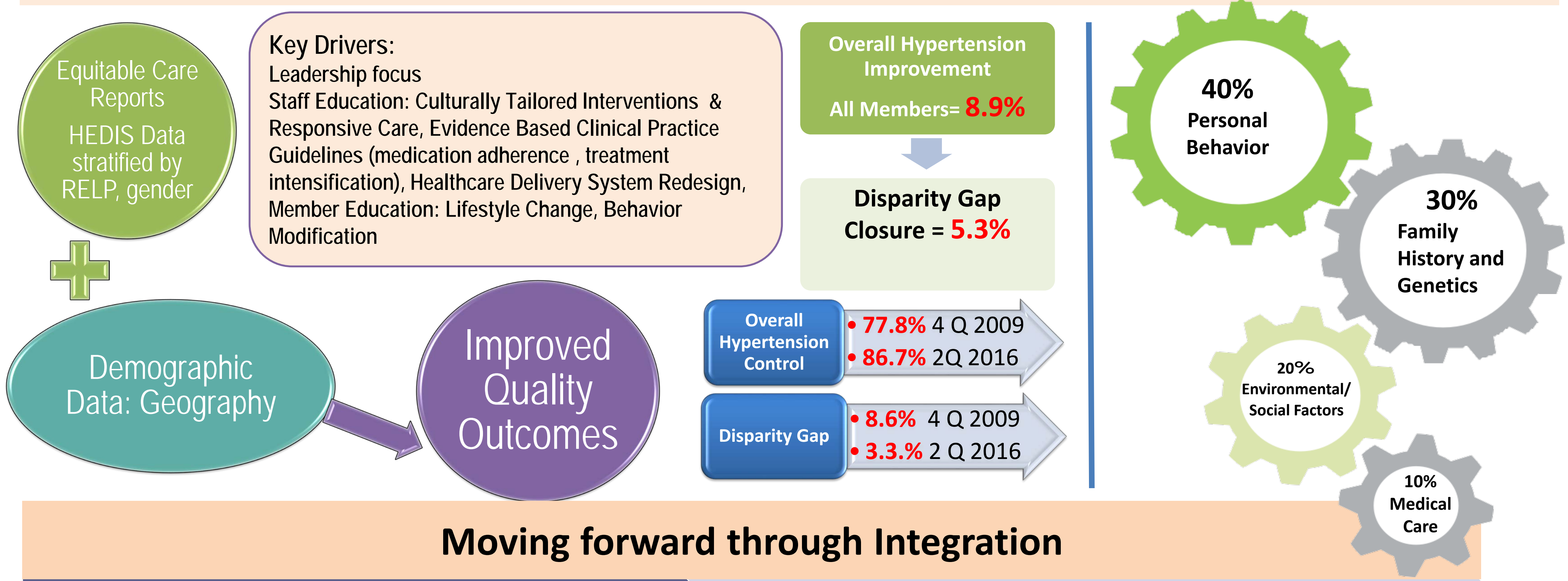
Health Disparities Vision Statement

“Be a leader in eliminating disparities in health and health care, provide equitable care to our members, target resources to areas of need in the communities we serve, identify and implement strategies and policies that support equity in health nationwide, including universal coverage.”

- Kaiser Foundation Health Plan/Hospitals Boards of Directors (2007)



Quality through the Health Equity Lens: Addressing Disparities and Social Determinants of Health for Blacks/African American with Hypertension



Moving forward through Integration

2010-2016

2016-2020

Equitable Care Health Outcomes

- Data: 16 HEDIS measures
- Race, Ethnicity, Language Preference (RELP)
- Hypertension Care Management- African Americans
- Colorectal Cancer Screening- Hispanics/Latinos
- Diabetes A1C Control

Equitable Care

- IOM 6 aims of Improvement gender, ethnicity, geographic location, and socioeconomic status (SES)
- National Quality Priorities

Health Equity

- Total Health
- Beyond quality and healthcare
- Workforce diversity
- Community engagement /CHNA
- Social determinants of health

Health and Healthcare Disparities

Make Health Equity a strategic priority- leadership commitment.

Develop structure and process to support health equity work.

Deploy specific strategies to address multiple determinants of health on which health care organizations can have direct impact: health care services, SES, physical environment, healthy behaviors.

Provide culturally responsive care, and promote diversity and inclusion.

Develop partnerships with community organizations.

Emerging Health Equity Framework

References:

1. J. Michael McGinnis, et al; The Case For More Active Policy Attention To Health Promotion; Health Affairs, 2002
2. Wyatt R, Laderman M, Botwinick L, Mate K, Whittington J. Achieving Health Equity: A Guide for Health Care Organizations. IHI White Paper. Cambridge, Massachusetts: Institute for Healthcare Improvement; 2016. (Available at ihi.org)
3. Bartolome, R., et. al, Population Care Management and Team-Based Approach to Reduce Racial Disparities among African Americans/Blacks with Hypertension, Perm J 2016 Winter;20(1):53-59