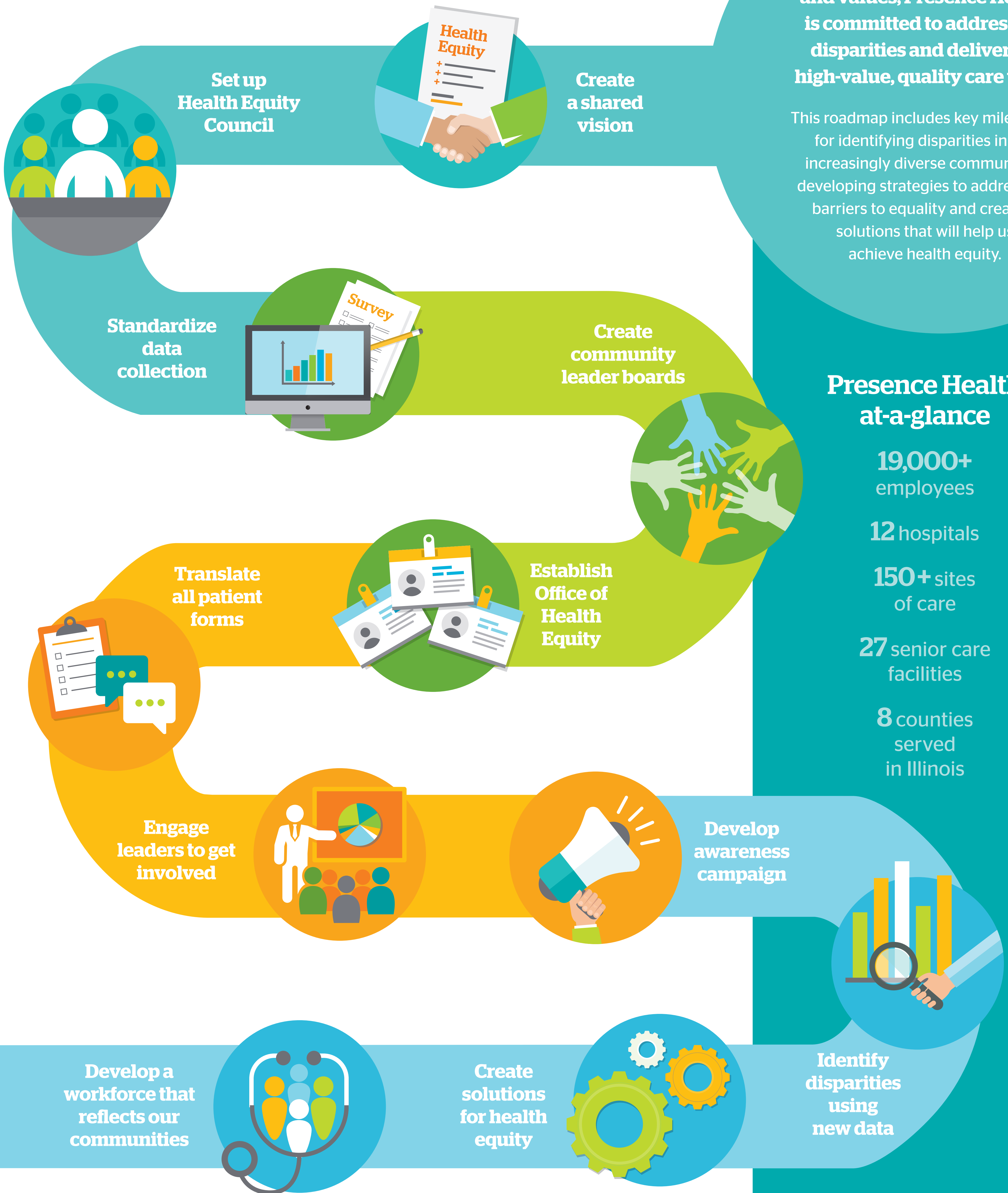


Our journey.

A path to inclusive and more equitable care.



Guided by our mission and values, Presence Health is committed to addressing disparities and delivering high-value, quality care to all.

This roadmap includes key milestones for identifying disparities in our increasingly diverse communities, developing strategies to address the barriers to equality and creating solutions that will help us achieve health equity.

Presence Health at-a-glance

19,000+ employees

12 hospitals

150+ sites of care

27 senior care facilities

8 counties served in Illinois